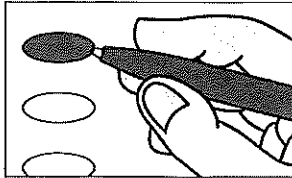


Sample BALLOT
STATE OF MISSISSIPPI
SIMPSON COUNTY
2022 GENERAL ELECTION
TUESDAY, NOVEMBER 8, 2022

INSTRUCTIONS TO VOTER:



Fill in the oval to the left of the name of your choice. You must blacken the oval completely using a dark pen, and do not make any marks outside of oval. Do not use a red pen, felt tip pen or any type of pencil.

DO NOT CROSS OUT - If you change your mind, exchange your ballot for a new one. If you tear, soil, deface or erroneously mark this ballot, return it and obtain another.

United States

For US House Of Representatives
3rd Congressional District
Vote for ONE

- ☐ Michael Guest Republican
- ☐ Shuwaski A. Young Democrat
- ☐ Write-In

Nonpartisan Judicial Election

For Chancery Court
Chancery District 13 Place 2
Vote for ONE

- ☐ Gerald M. Martin Nonpartisan
- ☐ Write-In

Nonpartisan Judicial Election

For Court Of Appeals
District 4 Position 1
Vote for ONE

- ☐ Bruce W. Burton Nonpartisan
- ☐ Virginia Carlton Nonpartisan
- ☐ Write-In

For Circuit Court
Circuit District 13 Place 1
Vote for ONE

- ☐ Matthew G. Sullivan Nonpartisan
- ☐ Write-In

For Circuit Court
Circuit District 13 Place 2
Vote for ONE

- ☐ Stanley A. Sorey Nonpartisan
- ☐ Write-In

For Chancery Court
Chancery District 13 Place 1
Vote for ONE

- ☐ David Shoemake Nonpartisan
- ☐ Albert Turnage Nonpartisan
- ☐ Write-In

TURN BALLOT OVER TO CONTINUE VOTING

Special Election

**For Simpson County
Chancery Clerk**

Vote for ONE

- | | |
|--|-------------|
| <input type="radio"/> Red Everett | Nonpartisan |
| <input type="radio"/> Clayton M. Giles | Nonpartisan |
| <input type="radio"/> Tim Gray | Nonpartisan |
| <input type="radio"/> Willie McDonald | Nonpartisan |
| <input type="radio"/> Randy Moore | Nonpartisan |
| <input type="radio"/> Tameika M. Smith | Nonpartisan |
| <input type="radio"/> Write-In | |

School Board

**For School Board
School Board Dist 1**

Vote for ONE

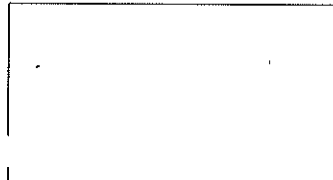
- | | |
|---------------------------------------|-------------|
| <input type="radio"/> Lillie L. Hardy | Nonpartisan |
| <input type="radio"/> Write-In | |

School Board

**For School Board
School Board Dist 2**

Vote for ONE

- | | |
|---------------------------------------|-------------|
| <input type="radio"/> Krystal Kahn | Nonpartisan |
| <input type="radio"/> Ralph D. Walker | Nonpartisan |
| <input type="radio"/> Write-In | |



TURN BALLOT OVER TO CONTINUE VOTING